

Technology becomes simplicity





▀ DO YOU WANT TO SAVE TIME, SPACE AND MONEY?

With the new **MODULA Sintes1** vertical lift module designed by System Logistics you are able to revolutionize your warehouse by saving up to 90% of the floor space currently occupied by traditional storage methods. It's the ideal VLM for storage and retrieval of small items such as electronic and pharmaceutical components or other small tools, optimizing the storage space available while allowing operators to achieve unmatched picking rates.

The **MODULA Sintes1** was developed as

the result of a specific in-depth market study conducted on the dimensions and volumes of the VLMs marketed and provided to date. The **MODULA Sintes1** can easily be installed in any industrial environment, shop, parts depot or small warehouse and its small footprint allows for you to adapt it to your operation, even where warehouse space constraints are present.

▀ NO COMPROMISE ON EFFICIENCY

Utilize all of the ceiling height in your facility,

allowing for a drastic reduction in the amount of floor space required for your storage operations, all while greatly improving pick rates and accuracy. Every item stored within the **MODULA Sintes1** is able to be tracked efficiently, allowing operators to save valuable time with this functional and ergonomic VLM system. All of these benefits are available in the **MODULA Sintes1**, without sacrificing efficiency or optional features offered on even the most advanced warehouse systems. The **MODULA Sintes1** is adaptable and flexible to any working environment and is ideal for regaining floor space in a cost conscious solution.

**Unmatched Picking Speed:
*Up to 115 Cycles/Hour**

**All of the MODULA®
Lift Options are
available on
the Sintes1
Models**

**Unit Heights
Available:
8'-6^{3/8}" to
23'-3^{1/2}"**

**Usable
Tray Depth:
25.75"**

**Unit Height
Increments
Every: 3.94"**

**Tray
Adjustability:
1.0"**

**Usable
Tray Widths:
51.18" and
66.93"**



* Unit performance is dependent on the configuration selected.





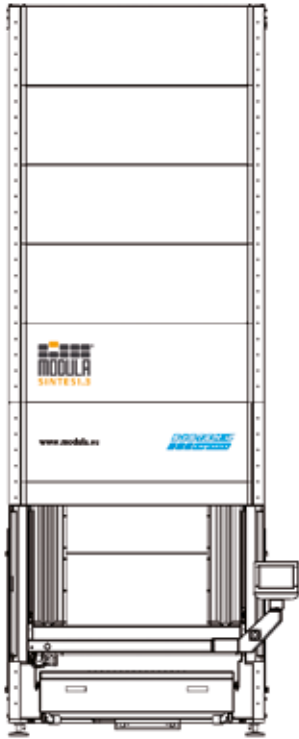
HOW IT WORKS

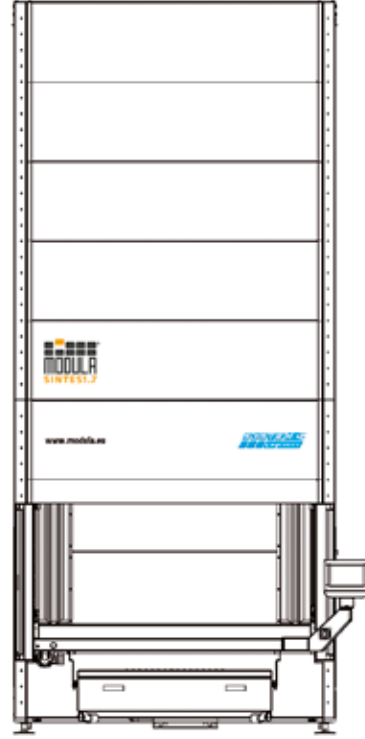
Products are stored within the **MODULA Sintes1** in metal trays, which are automatically stored and retrieved as needed. Within the unit's structure a vertical lifting platform brings a tray containing the product to a determined storage level and

then deposits the tray to a storage location. This is all done automatically through the use of innovative hardware and controls integrated in a user friendly software system. Tray height adjustability is provided on 1.0" increments allowing for varying product heights and overall unit heights are available on 3.94" height increments to best suit your

facility. Each tray has a standard net load **capacity of 441 Lbs.** and trays are available with plain perimeter walls or with slotting, allowing for the use of partitions and dividers. Furthermore, the **MODULA Sintes1** is also available with any option or feature available on the **MODULA® Lift VLM.**








Sintes1.3 Dimensions

UNIT WIDTH	64.96"
UNIT DEPTH, WITH INTERNAL PICKING BAY	93.58"
UNIT DEPTH, WITH EXTERNAL PICKING BAY	122.05"
MIN. UNIT HEIGHT	102.36"
MAX. UNIT HEIGHT	279.53"

Sintes1.7 Dimensions

UNIT WIDTH	80.71"
UNIT DEPTH, WITH INTERNAL PICKING BAY	93.58"
UNIT DEPTH, WITH EXTERNAL PICKING BAY	122.05"
MIN. UNIT HEIGHT	102.36"
MAX. UNIT HEIGHT	279.53"

MODELS

The **MODULA Sintes1** has been designed to have a modern and attractive appearance while having a robust frame structure composed of steel load bearing profiles and modular exterior steel cladding panels all produced using fully automated production processes. Two models are available, each with a unique tray size:

MODULA® Sintes1.3

Featuring a usable tray width of 51.18" and a usable tray depth of 25.75"

MODULA® Sintes1.7

Featuring a usable tray width of 66.93" and a usable tray depth of 25.75".

Both models provide a net load capacity per tray of 441 Lbs and a total unit load capacity of 55,115 Lbs. Two tray wall heights are available

to suit a variety of applications. They are 1.22" and 2.20".

DELIVERY CONFIGURATIONS

For all **MODULA Sintes1** models you are able to select between a unit having an **Internal Picking Workstation** (the preferred configuration if a reduced unit footprint is desired) or a

More MODULA[®], more space



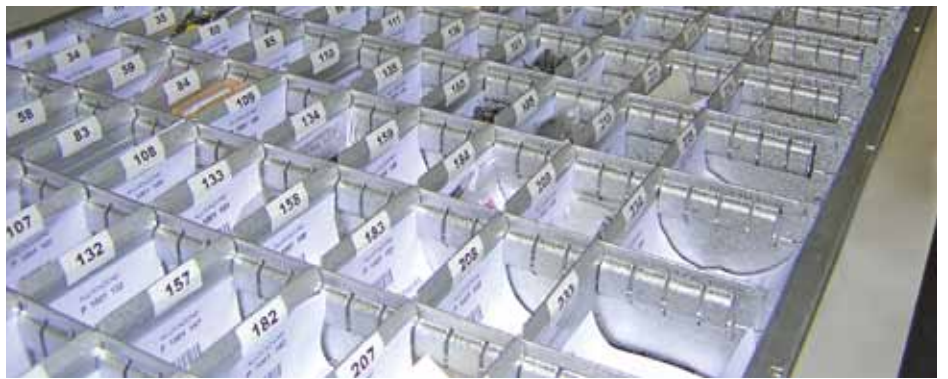
unit having an **External Picking Workstation** (the ideal configuration for true top picking applications and having the ability to easily respond to higher throughput needs). Increased throughput is achieved using the **Dual-Delivery** configuration, with its Continuous Picking availability. For either delivery configuration the best possible operator ergonomics are provided ensuring safety and productivity in your workplace.

➤ MORE MODULA, MORE SPACE SAVINGS

You can improve your warehouse one step at a time. The **MODULA Sintes1 VLM** is able to be integrated as a part of a larger multiple unit system and be implemented over several stages to best suit your needs.

Several **MODULA Sintes1** units are able to

be managed by only one operator. Through the user friendly **Copilot** operator interface, productivity is able to be improved by managing multiple units for either picking or replenishment by synchronizing operations to achieve maximum efficiency.



MODULA Sintes1 is designed using highly efficient components along with innovative options and features to ensure a significant energy savings. Lower energy consumption is a result of using less powerful motors with

higher efficiency ratings vs. similar units. The unit's **2.0 Hp (1.5 kW)** vertical axis lifting motor provides a significant energy savings. The optional **MODULA Green** feature allows for further energy saving by recovering the

energy produced as the trays are lowered to the picking bay, which would otherwise be dissipated as heat and wasted energy. Thanks to this option the return on investment can easily be realized in just a few months time.





OPERATOR CONSOLE

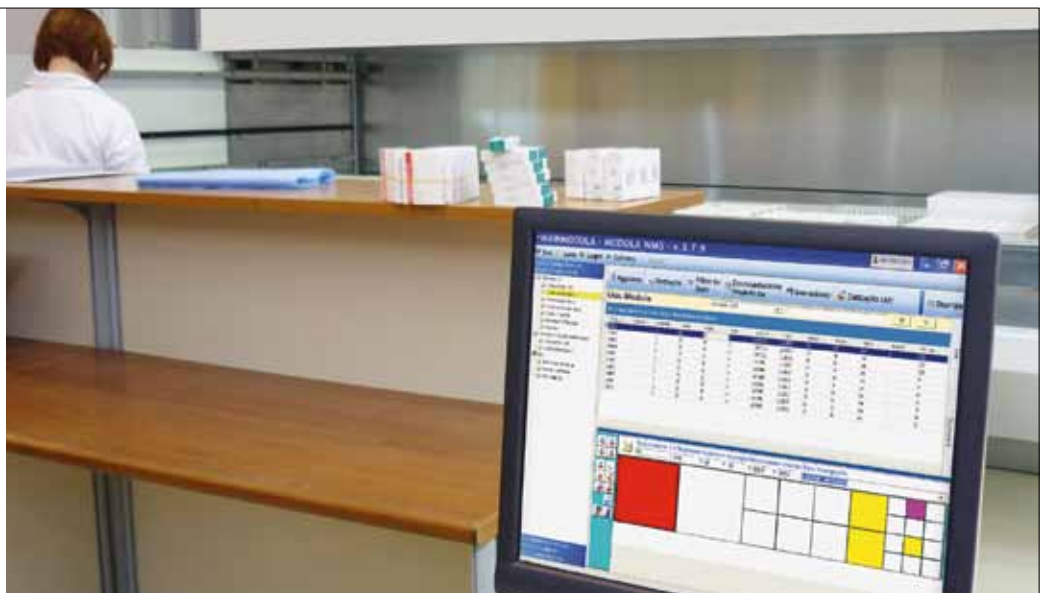
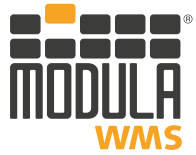
All **MODULA Sintes1** units have a color graphical touch screen console designed specifically for industrial environments enabling the operator to access all of the unit's functions quickly and intuitively. The **MODULA Sintes1's** touch screen console has a graphical interface developed in a full color icon based environment with simple and user friendly icons, making it very intuitive for operators who do not require any special training. An easy to use wizard feature

enables the operator to solve every fault or issue, dramatically reducing inefficiency. To ensure the security of items stored within the unit operators are assigned specific passwords authorizing various levels of access permission depending on their responsibilities. The console also incorporates automatic functions for managing scheduled maintenance. The system allows users to check quantities and products stored within the trays at any time for perfect product traceability. All tray movements and picking operations are recorded in a log file and can be viewed at

any time providing total control of the unit as well as the products handled.

MODULA WMS SOFTWARE

System Logistics has designed dedicated software to easily and completely supervise all the operations offering full control over your warehouse. SW can be interfaced with any ERP offering supervision not only on a unit such as **MODULA Sintes1** but also on the entire product flow.

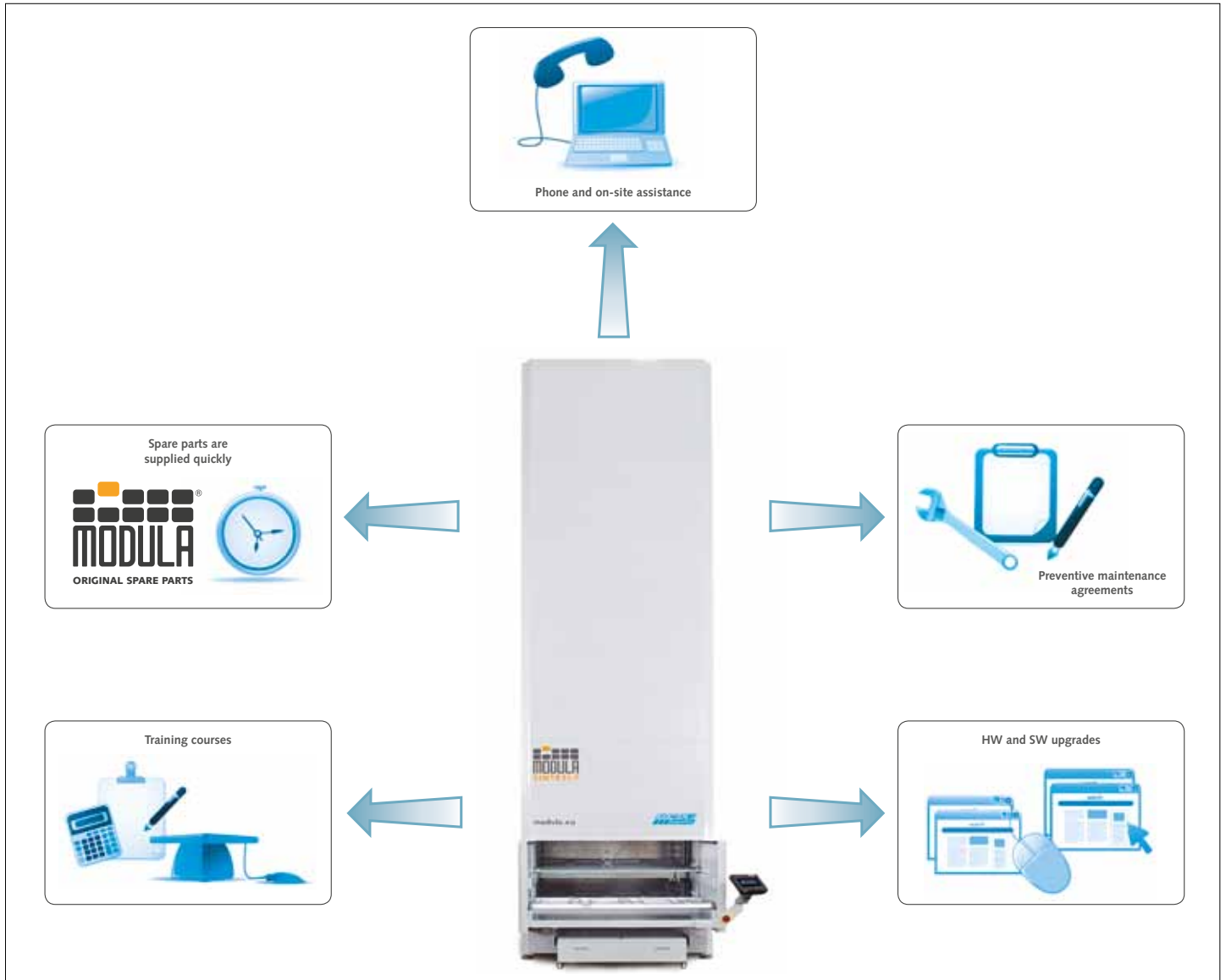


THE CUSTOMER IS THE HEART OF OUR FOCUS

We consider Customer Care service to be an integral part of our overall solution, offering as-

sistance to customers to solve specific problems or faults that may be encountered. Our goal is to enable our customers to use the automated solutions we provide in the most satisfactory way. Through a remote monitoring system guided by

a dedicated analysis and diagnostic program we are able to assist the customer in several corrective actions allowing for technical intervention using specifically developed procedures to restore operation to the **MODULA Sintes1** quickly.

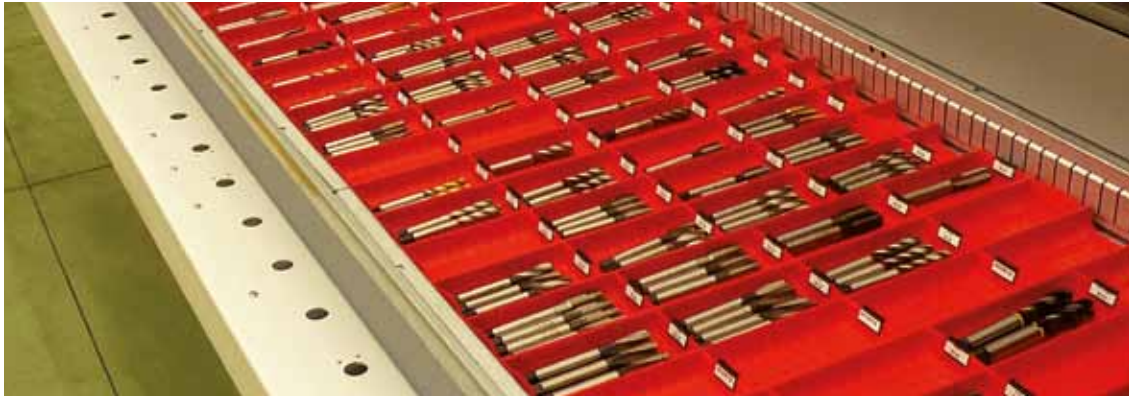


MODULA®, A DIVISION OF SYSTEM LOGISTICS

MODULA® is a division of System Logistics

S.p.A, a major worldwide player in the industrial automation and logistics sector offering turn-key integrated material handling solutions, with applications in any sector.

As a part of System Logistics, MODULA® supplies automated solutions worldwide. To learn more about MODULA®, you can visit us online at www.modula.eu



Accessories industry

AUTOCENTRI BALDUINA	Italy
CENTRO PORSCHE ROMA	Italy
DICSA	Spain
EUROBEARINGS	Spain
FRIGICOLL	Spain
GB RICAMBI	Italy
HIMOINSA	Spain
IP CLEANING	Italy/Spain
TIVOLY	France

Aviation industry

ALTUS AIR FORCE BASE	USA
BOEING	USA
CENTRO ELICOTTERI CARABINIERI	Italy
CONTINENTAL AIRLINES	USA
DASA	Germany
EADS	France
EMBRAER	Brazil
HONEYWELL INTERNATIONAL AEROSPACE	Mexico
SMITHS AEROSPACE COMPONENTS	USA
SNECMA	France
SPECTRUM AEROSPACE	USA
UNISON ENGINE COMPONENTS-MTTP	USA

Food industry

ARLA FOODS	Great Britain
COCA-COLA ENTERPRISES	Great Britain
FRUCTAMINE	Italy
GATE GOURMET	Denmark
INALCA	Italy/Russia
MENÙ	Italy
TETRA PAK PACKAGING SOLUTIONS	Italy

Aluminium industry

ACRA	France
ABASTECIMIENTOS DEL NORTE	Spain
C2 SERRAMENTI	Italy
EMMEGI-EXPAL	Portugal
ESTRUPERFIL	Spain
EURALEX'	Spain

Civil service/Army

A.O.U. OSPEDALI RIUNITI DI TRIESTE	Italy
COMPANY SUPPORT ARMAMENT	USA
EMBASSEY OF THE USA	Great Britain
FORT CAMPBELL	USA
FORT LEWIS	USA
HUNTER ARMY AIR FIELD	USA
NEW YORK CITY TRANSIT AUTHORITY	USA
RENFE OPERADORA	Spain
SANTA BARBARA	Spain
U.S. POSTAL SERVICE	USA

Furnishing industry

GRUPPO SPAR	Italy
MARINER	Spain
MOBILI BERLONI	Italy
SCAVOLINI	Italy

Automotive industry

A.B.S. ALL BRAKE SYSTEMS B.V.	The Netherlands
APRILIA	Italy
AUTOMOBILI LAMBORGHINI	Italy
AUTOSPORT TEPPER	The Netherlands
BERCO	Italy
BOSCH	Italy
BREMBO	Italy/Poland
CATERPILLAR (FIAT)	USA/Italy/Poland
CNH	Italy
CONTITECH	Germany
DAIMLER	Germany
DUCATI MOTOR	Italy
FERRARI	Italy
FIAT AUTO POLAND	Italy/Poland
FORD MOTOR COMPANY	USA
HARLEY DAVIDSON	USA
IVECO	Italy
KOMATSU UTILITY EUROPE	Italy
LAVERDA	Italy
MASERATI	Italy
OPEL	Spain
PEUGEOT	France/Spain
SCUDERIA TORO ROSSO SPA	Italy
SHANGHAI AUTOMOTIVE BRAKE SYSTEMS	China
SIEMENS AUTOMOTIVE SA	France
SUZUKI AMERICA	USA
TOWER AUTOMOTIVE	USA
TRW AUTOMOTIVE PUMPS	Italy
VOLKSWAGEN	Germany/Spain
WENDLE NISSAN SALES	USA

Biomechanical/biomedical industry

BIOMET	Spain
COMECER	Italy
G.F.	Italy
LEAN	Italy
SYNTHEX	USA
ST. JUDE MEDICAL	USA

Paper-making industry/publishing

KIMBERLEY-CLARK	USA
ZANICHELLI EDITORE	Italy

Ceramic industry

CERAMICA SANT'AGOSTINO	Italy
CERAMICAS GAYA	Spain

COLORKER	Spain
COOPERATIVA CERAMICA D'IMOLA	Italy
GRESPANIA	Spain
INTERNACIONAL DE CERAMICA	Mexico
LAMINAM	Italy
PORCELANOSA	Spain
SACMI	Italy/Spain
SMALTICERAM	Italy

Electrical/electronic industry

ADC TELECOMMUNICATIONS	USA
ALCATEL BUSINESS SYSTEM	France
BTICINO	Italy
CANON	France
DASA	Germany
DATALOGIC	Italy/Slovakia
DURACEL	Italy
ELECTROLUX ZANUSSI	Italy
ELETTRIC 80	Italy
ELETTRONICA CIMONE-BEGHELLI	Italy
FIRST SOLAR	Germany
GARMIN	USA
GENERAL ELECTRIC CANADA	Canada
GEWISS	Italy
INFINEON	Portugal
KOXKA	Spain
MASTER CADENA	Spain
ORANGE	Great Britain
SEW USOCOME	France
STAUBLI	France
TYCO ELECTRONICS	USA

Energy industry

NORDEX ENERGY	Germany
---------------	---------

Pharmaceutical industry

ABBOTT	France/Italy
AVENTIS PHARMACEUTICAL	USA
BAXTER	Great Britain
FROSST IBERICA	Spain
GLAXOSMITHKLINE	UK/USA/Ita/Fra
MEDAC	Germany
SANOFI-AVENTIS	France

Mechanical/metallurgical industry

ABB INDUSTRIE SPA	Italy
ABB POWER TECHNOLOGIES	Italy
ACCIAIERIE VALBRUNA	Italy
ALSTOM POWER IT.	Italy
ARCELOR PIOMBINO	Italy
BONFIGLIOLI RIDUTTORI	Italy
DALMEC	Italy
DRAEGER	Germany

HONEYWELL GARRETT	Italy/Romania
KOENIG METALL	Germany
MOTOVARIO	Italy
NOVOFERM	Germany
ORMIC	Italy
OTIS	Italy
ROSSI MOTORIDUTTORI	Italy
ZUCCHETTI RUBINETTERIE	Italy

Naval industry

CANTIERE NAUTICO CRANCHI	Italy
CRN	Italy
FERRETTI	Italy
GRUPO IZAR	Spain
PERSHING	Italy

Hydraulic/pneumatic industry

BOSCH-GRUPPO OIL CONTROL	Italy
MARZOCCHI POMPE	Italy
PNEUMATICA FARBO	Italy
POMPETRAVAINI	Italy
SC OLEODINAMICA	Italy
TECONASA	Spain
WALVOIL	USA

Optical industry

BAUSCH & LOMB-IOM SPA	Spain
DE RIGO VISION	Italy
FUJI PHOTO FILM	Great Britain
LUXOTTICA	Italy
MARCOLIN	Italy
OPTICAS	Spain

Plastics industry

ALCOLOR	Spain
FAVARON	Italy
FORMOSA PLASTICS CORP.	USA
GRAHAM PACKAGING EUROPE	Spain
STILFLEX	Italy
TRELLEBORG SEALING SOLUTIONS	Italy

Textile/clothing industry

AEFFE	Italy
CIOCCA	Italy
CLOTHING COMPANY-BELSTAFF	Italy
FAST FASHION	Italy
FILATESS	Italy
GIMENEZ COLLECTION	Spain
GRUPPO MAX MARA	Italy
PRADA	Italy
REALFIO TEXTEIS	Portugal
SIXTIE FACTORY	Italy

SYSTEM LOGISTICS MODULA SINTES1

SYSTEM LOGISTICS CORPORATION

P.O. Box 1608, 90 Alfred A. Plourde Parkway

Lewiston, ME 04241

Tel. 1 888 233 6796

Fax 1 207 786 0271

info@modula-us.com

www.modula-us.com