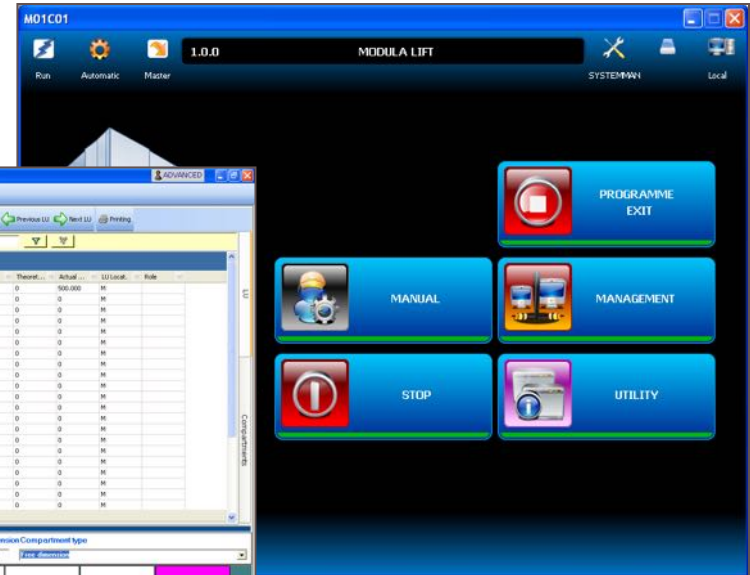
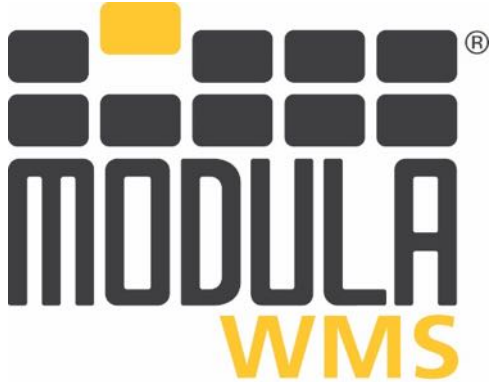
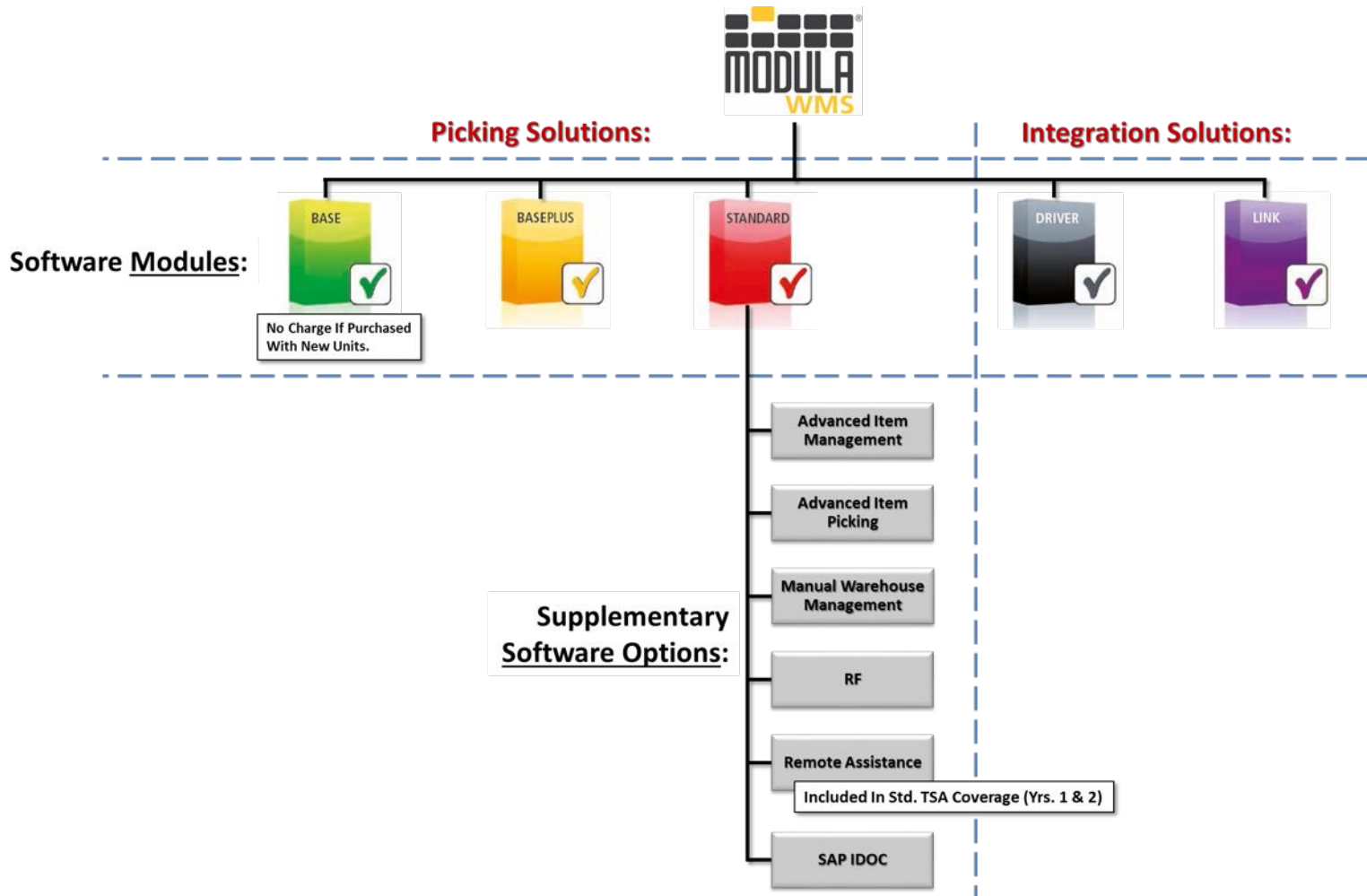


MODULA® WMS Software Solutions



WMS Software Hierarchy



MODULA[®] WMS Software Features

- The standard use of a modern relational database on all software modules.
- **Easy and fast data backup** as well as data restoration in the event of a software malfunction.
- A **customizable grid / screen layout** to meet the needs of individual users.
- **Advanced filtering** options allowing for customizable searches and orders.
- **Advanced user / operator rights** management.
- Allows for the use of RF terminals for manual storage area management.
- Hierarchical item list management (Kitting).
- **Graphical location management** for both the VLM unit(s) as well as manual areas (*shelving, rack, etc.*).

MODULA[®] WMS Software Features

- **Configurable integration** with enterprise management systems via an ASCII file exchange. Data exchange on shared tables is also accessible via ODBC driver, XML files, and Excel spreadsheets.
- Packing list management.
- Material transit management.
- The ability to batch pick items picked from different locations, as well as the ability to utilize pick-to-light / put-to-light displays.
- Internal material movement management between different areas based on minimum stock values defined for each area.
- The ability to create **custom reports** with an easy to use, intuitive report tool.
- Automatic database maintenance to optimize the software's performance.



WMS BASE Software Features



The WMS – BASE software package, is the Free package provided with MODULA[®] VLM units.

It provides some basic tools for vertical warehouse management, such as own register management, graphic warehouse location management, handling by means of orders or direct requests, execution of physical warehouse inventories, and integration with the management system by means of manual text file exchange with predefined trace.

The available features of the WMS – BASE software are:

- Item list management allowing operators to pick by part number.
- The ability to manage one or more MODULA[®] VLM units.
- VLM location management with the use of an easy to use a graphical tool.
- Item movement management for the picking and replenishment of orders.
- Item movement management with the ability to perform immediate requests (hot-picks).
- User / operator management based on three distinct hierarchical access levels, depending on their role.
- The ability to manually import / export data to and from with the enterprise host system via a fixed – layout ASCII file exchange.

WMS BASE PLUS Software Features



The WMS – BASE PLUS software package, which adds two important software functionalities in addition to the WMS – BASE software package.

The available features of the WMS – BASE PLUS software are:

- Advanced security management, providing for a user's database with personalized operator's passwords, beneficial to users that desire to lock out specific trays for certain operators / users, for example.
- An automatic and configurable import / export data exchange with a client's management system (host), using text files or shared tabled accessible via ODBC, .XML files, ASCII files, or using Excel files.

WMS STANDARD Software Features



The WMS – STANDARD software package includes functionality designed to make the MODULA[®] VLM units as efficient as possible.

The main features of the WMS – STANDARD software package include:

- Dynamic compartment management (item/compartment matching)
- Dynamic batch and serial number management
- FIFO and due date management.
- Warehouse statistical analysis tools as well as printed report customization.

WMS STANDARD Software Features



The WMS – STANDARD software package adds the following features and functionalities to the WMS – BASE software package:

- Item and location management.
- Advanced user/operator management, it's possible to configure for each operator the enabled procedures required for their role.
- A customizable print & label report management tools.
- Automatically assign an item to a preselected compartment or location.
- Complete data import / export management with customizable layouts.
- Items can be managed with a FIFO sequence, or on a sub code based priority.
- It is possible to retrieve statistical information of the VLM's movements and operations.
- It is possible to manage movement causes for immediate requests.

WMS DRIVER Software Features



WMS – DRIVER provides high level management of MODULA® VLM units, by sending tray movement orders (*picking requests, replenishment requests and inventory cycle counting*) via shared tables or ASCII files. These orders are simply tray lists associated with item picking or replenishment data (*item number, description, quantity, etc.*) grouped by orders.

When the order is complete, WMS – DRIVER sends back the results of the order to the client's ERP or WMS system, which then regains control of the order to proceed with its workflow.

The available features of the WMS – DRIVER software are:

- For clients / users already having a “WMS” type of software in place, the WMS – DRIVER software package allows the existing “WMS” to communicate to and directly drive one or more MODULA® VLM units, with no need to develop direct communication protocols with the machines.
- In addition, users / operators will be able to still utilize the MODULA® unit's CoPilot operator console (HMI) for the required picking and replenishment activities as the information is clearly shown on the screen.
- By purchasing the DRIVER software package, the customer is provided with the communications interface to perform an automatic data exchange.
- The WMS – DRIVER software package is an alternative to MODULA® LINK as well as the WMS – STANDARD and/or WMS – BASE PLUS software packages.

MODULA® LINK Software Features



MODULA® LINK allows control of MODULA® VLM units at a more in-depth level, by directly driving tray request commands & return operations. It is also possible to manage some available unit accessories, such as position indicator items.

MODULA® LINK requires the client's Host system to manage a virtual, direct communication with unit by connecting to local server PC via a socket connection.

With MODULA® LINK the client's ERP or WMS system has the full and precise control of the MODULA® VLM unit; it is possible to manage all the advanced logistic features which the client's ERP or WMS system may be equipped with.

The available features of the MODULA® LINK software are:

- MODULA® LINK software package allows an existing "WMS" to communicate/directly drive one or more MODULA® VLM units, with no need to develop direct communication protocols.
- Using MODULA® LINK operators are only able to control picking and replenishment operations through an external device, such as a PC, hand-held RF terminal, etc.
- By purchasing the MODULA® LINK software package, the customer is provided with the means for a direct communication to VLM units via sockets to drive the units.
- The MODULA® LINK software package is an alternative to the WMS – DRIVER, as well as the WMS – STANDARD and/or WMS – BASE PLUS software packages.



WMS Module Functionalities

Software Functionalities / Features:	Main Software Modules:				
	BASE	BASE PLUS	STANDARD	DRIVER	MODULA LINK
Item List Management:	•	•	•		
Graphical Location Management:	•	•	•		
Picking / Replenishment Order Management:	•	•	•		
Immediate Item Request Management:	•	•	•		
VLM Inventory Management:	•	•	•		
Basic User Account / Profile Management:	•	•	•		
Manual Import/Export of Data Via ASCII Files:	•	•	•		
Configurable Automatic Import/Export of Data:		•	•	•	
Automatic Data Back-Up:	•	•	•		
Automatic Database Management:	•	•	•		
Item Movement History Management:	•	•	•		
Item Sub-Code Management:			•		
Table Sub-Code Management:			•		
Material Status Management:			•		
Packaging Management:			•		
Expiration Date Management:			•		
Advanced User Profile Security Management:		•	•		
Customizable Print Reports:			•		
Customizable Label Formatting:			•		
Dynamic (Automatic) Item-To-Compartment Allocation:			•		
Item Management (Volume, FIFO, Priority):			•		
View VLM Activity Statistical Information:			•		
Movement Cause Management For Immediate Item Requests:			•		
Client HOST System Management of Units Via Sockets:					•



Optional Software Modules Available

Available With:



Advanced Item Management Module:

The Advanced Item Management Module allows for added functionality, building upon what is included with the WMS STANDARD Module. It allows for item security management, allows users to associate an image to a particular item, a user can also group items into families and categories to improve search and filtering functionality. Finally it is possible to use additional sub codes to better define items and orders.

Advanced Item Picking Module:

The Advanced Item Picking Module allows for added functionality, building upon what is included with the WMS STANDARD Module. It allows for packing list management, kitting, batch picking and transit materials management (*totes, boxes, etc.*)

Manual Warehouse Management Module:

The Manual Warehouse Management Module allows for the creation and management of manual storage areas, in proximity to the VLM. This module allows for management of the manual areas using a user-friendly graphical tool, management of picking in the manual areas and also the management of material distribution between different manual areas based on accessed quantities. Users can also manage material transfer between areas as well as materials incoming from receiving areas.



Optional Software Modules Available

Available With:



RF Module:

The RF Module extends the functionality of the Manual Warehouse Management Module and it is only available in addition to the Manual Warehouse Management Module. This module allows the use RF terminals to manage manual storage areas.

Remote Assistance Module:

The Remote Assistance Module provides the capability for Vidmar TOWER technicians to remotely diagnose faults and assist in troubleshooting immediately, without waiting for a technician to arrive. The customer must allow for a VPN connection to be made for this module to be available.

The Remote Assistance Module / remote support is made available to all clients for no charge during the standard included 5/8 telephone support agreement period for the first two (2) years of ownership.

SAP IDOC Module:

Allows interfacing with the SAP R3 WM module by means of IDOC exchange via FTP.



Available With:

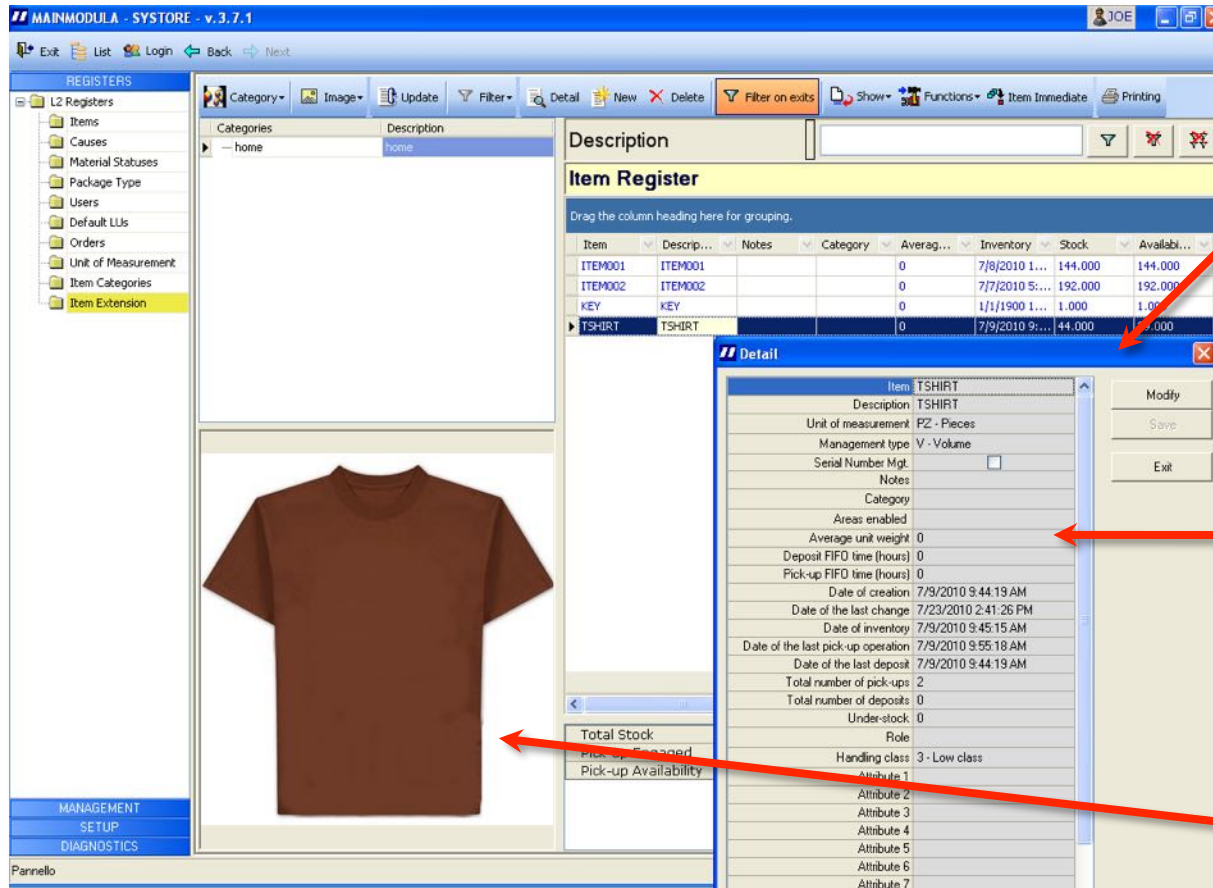


Optional Module Functionalities

Software Functionalities / Features:	Optional Supplementary Software Modules:					
	Advanced Item Mgmt.	Advanced Item Picking	Manual Warehouse Mgmt.	RF	Remote Assistance	SAP IDOC Integration
Item Based Security Management:	•					
Item Management With Photos of Each Item:	•					
Item Family Management:	•					
Item Category Management:	•					
Supplementary Attribute Management:	•					
Packing List Management:		•				
Kitting Management:		•				
Batch Picking Management:		•				
Pick-To-Light / Put-To-Light Batch Picking:		•				
Material Transit Management:		•				
Manual Storage Areas (Racks, Shelves, Cabinets) Management:			•			
Management of Item Movement Between Areas:			•			
Receiving Area Management:			•			
RF Terminal Management:				•		
Remote Assistance:					•	
IDOC Exchange To SAP® R3 WM Module:						•

Item Management Capabilities

WMS software manages its own item list...



The screenshot displays the MODULA SYSTORE v.3.7.1 software interface. The main window is titled "MAINMODULA - SYSTORE - v.3.7.1" and shows a user profile for "JOE". The interface includes a menu bar with options like Exit, List, Login, Back, and Next. A left sidebar lists various registers such as L2 Registers, Items, Causes, Material Statuses, Package Type, Users, Default LUs, Orders, Unit of Measurement, Item Categories, and Item Extension. The main area is divided into two sections: "Item Register" and "Item Detail".

The "Item Register" section shows a table of items with columns for Item, Description, Notes, Category, Average unit weight, Inventory, Stock, and Availability. The table lists items like ITEM001, ITEM002, KEY, and TSHIRT. A red arrow points from the "TSHIRT" row to the "Item Detail" window.

The "Item Detail" window shows a detailed view of the "TSHIRT" item. It includes fields for Item, Description, Unit of measurement, Management type, Serial Number Mgt., Notes, Category, Areas enabled, Average unit weight, Deposit FIFO time (hours), Pick-up FIFO time (hours), Date of creation, Date of the last change, Date of inventory, Date of the last pick-up operation, Date of the last deposit, Total number of pick-ups, Total number of deposits, Under-stock, Role, Handling class, and Attributes 1 through 7. A red arrow points from the "Unit of measurement" field to the text "It is possible to use the unit weight for each item. This function is useful when you want to use picking accessories, such as a counting scale, etc."

Below the "Item Register" table, there is a section for "Total Stock" and "Pick-up Availability". A red arrow points from this section to the text "It is possible to associate an image of each item in the list."

- It is possible to expand the item list with a series of attributes that extend the item list characteristics to increase the search, filtering, and grouping capabilities.
- It is possible to use the unit weight for each item. This function is useful when you want to use picking accessories, such as a counting scale, etc.
- It is possible to associate an image of each item in the list.

Graphical Tools Capabilities

Using the built-in graphical tools, it is possible to do the following...

Create compartments within a tray assigning one item from the item list (with an automatic selection of the item code from a list).

Graphically replicate compartments on a tray.

Save compartment types and tray layout templates to allow their replication.

Define stock and maximum capacities for each compartment.

Search for empty compartment locations.

Create inventories of the contents of a tray range.

Search for trays containing a certain item.

MAINMODULA - SYSTORE - v.3.7.1

Exit List Login Back Next

REGISTERS MANAGEMENT

Managements L2

- LU location
- Compartment Graphics
- Retrieval orders
- Storage orders
- Request Queue
- Requests Carried out
- Order pos.s
- Compartment with ...
- Manual Storage Unit Ma...
- LU location
- Compartment Graphics
- Maintenance Jobs
- Device Database
- ImpExp...

Update Detail Filter on exits Default Compartment Division Immediate LU Detail Previous LU Next LU Printing

Compartment Management

Drag the column heading here for grouping.

Position	Item	Descr...	Notes	Sub 1	Sub 2	Material...	Package	Expiration	Compar...	Comp. ...	Stock	
66	TSHIRT	TSHIRT		RED	LARGE			1/1/2011 1...	MODUL	Free dimen...	25.000	0
67	TSHIRT	TSHIRT		YELLOW	LARGE			1/1/1900 1...	MODUL	Free dimen...	15.000	0
68	TSHIRT	TSHIRT		BLUE	LARGE			1/1/2011 1...	MODUL	Free dimen...	13.000	0
69	ITEM002	ITEM002						1/1/1900 1...	MODUL	Free dimen...	500.000	0
70	KEY	KEY		BRASS	MASTER	FIN		1/1/2020 1...	MODUL	Free dimen...	1900.000	0
71	M00003	Valve		BLOWOFF				1/1/1900 1...	MODUL	Free dimen...	0	0
72		Non signific...						1/1/1900 1...	MODUL	Free dimen...	0	0
73		Non signific...						1/1/1900 1...	MODUL	Free dimen...	0	0
74		Non signific...						1/1/1900 1...	MODUL	Free dimen...	0	0
75		Non signific...						1/1/1900 1...	MODUL	Free dimen...	0	0
76		Non signific...						1/1/1900 1...	MODUL	Free dimen...	0	0

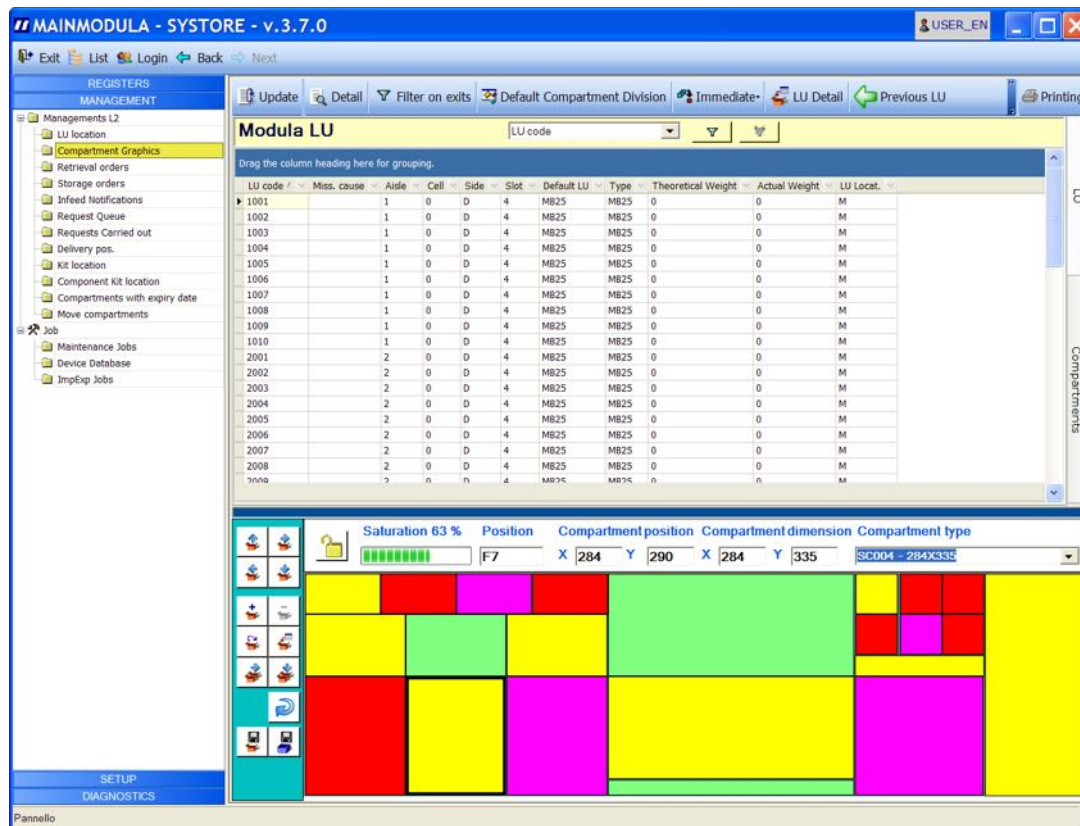
Saturation 14 % Position Compartment position Compartment dimension Compartment type

G2 820 0 410 428 Free dimension

SETUP DIAGNOSTICS

Graphical Tools Capabilities

It is possible to view tray cell layouts for each tray graphically to analyze cell sizes and utilization...



Item Search Capabilities

It is possible to use advanced grids to allow to filtering of item data, such as description, min. /max. levels, weight, etc...

MAINMODULA - SYSTORE - v.3.7.0 USER_EN

Exit List Login Back Next

Update Filter Detail New Delete Filter on exits Show Functions Item Immediate Printing

Item

Item Register

Drag the column heading here for grouping.

Item	Description	Stock	Availability	No. of Compartments	Notes	Inventory	Host	Average unit weight	Under-stock
C00001	Keyboard (usb)	100,000	100,000	1		11/06/2010 14.04.10	<input type="checkbox"/>	0	0
C00002	Mouse (usb)	175,000	175,000	1		11/06/2010 14.04.22	<input type="checkbox"/>	0	0
C00003	Computer Case (desktop)	25,000	25,000	1		11/06/2010 14.09.33	<input type="checkbox"/>	0	0
C00004	Computer Case (mini tower)	35,000	35,000	1		11/06/2010 14.09.37	<input type="checkbox"/>	0	0
C00005	RAM (2 Gb)	175,000	175,000	2		11/06/2010 14.07.12	<input type="checkbox"/>	0	0
C00006	RAM (1 Gb)	150,000	150,000	2		11/06/2010 14.06.58	<input type="checkbox"/>	0	0
C00007	HardDisk SATA (320 Gb)	25,000	25,000	1		11/06/2010 14.08.34	<input type="checkbox"/>	0	0
C00008	HardDisk SATA (500 Gb)	25,000	25,000	2		11/06/2010 14.06.25	<input type="checkbox"/>	0	0
C00009	MotherBoard	25,000	25,000	1		11/06/2010 14.07.36	<input type="checkbox"/>	0	0
C00010	DVD Recorder	25,000	25,000	1		11/06/2010 14.07.56	<input type="checkbox"/>	0	0
C00011	Spare Assembling Components (screw,cable)	100,000	100,000	2		11/06/2010 14.05.38	<input type="checkbox"/>	0	0
C00012	Usb Pen Drive (8 Gb)	125,000	125,000	3		11/06/2010 14.03.55	<input type="checkbox"/>	0	0
C00013	Usb Pen Drive (16 Gb)	160,000	160,000	3		11/06/2010 14.04.42	<input type="checkbox"/>	0	0
C00014	Graphic Card (AGP HD1440)	25,000	25,000	1		11/06/2010 14.08.16	<input type="checkbox"/>	0	0
C00015	Power Supply (450W Turbo Cooler)	35,000	35,000	2		11/06/2010 14.06.50	<input type="checkbox"/>	0	0
C00020	Complete Desktop PC	0	0	0		02/04/2010 10.00.37	<input type="checkbox"/>	0	0
C00030	Complete Tower PC	0	0	0		02/04/2010 10.00.37	<input type="checkbox"/>	0	0
E00001	Digital Tester	45,000	45,000	1		11/06/2010 14.11.33	<input type="checkbox"/>	0	0
E00002	Emergency Stop	500,000	500,000	1		11/06/2010 14.12.32	<input type="checkbox"/>	0	0
E00003	Electrical Power Fuse	650,000	650,000	3		11/06/2010 14.13.00	<input type="checkbox"/>	0	0
E00004	Contact 175	100,000	100,000	1		11/06/2010 14.14.00	<input type="checkbox"/>	0	0
E00005	Multifunction Rele Scale	200,000	200,000	1		11/06/2010 14.13.47	<input type="checkbox"/>	0	0
E00006	Pilz Emergency Stop Relay	200,000	200,000	1		11/06/2010 14.13.39	<input type="checkbox"/>	0	0
E00007	Three Core Flexible Cable (1.5 Sqmm 3183Y)	300,000	300,000	1		11/06/2010 14.12.18	<input type="checkbox"/>	0	0
E00008	Plug RJ45	400,000	400,000	3		11/06/2010 14.13.19	<input type="checkbox"/>	0	10,000
E00009	Ethernet Cable (CAT 6)	750,000	750,000	1		11/06/2010 14.12.03	<input type="checkbox"/>	0	0

Total Stock	100,000	Total Capacity	200,000
Pick-up Engaged	0	Deposit Engaged	0
Pick-up Availability	100,000	Deposit Availability	100,000

MANAGEMENT
 SETUP
 DIAGNOSTICS

Pannello

Data Search Capabilities

It is possible to use advanced grids to allow to filtering of order and group data...

MAINMODULA - SYSTORE - v.3.7.1

Exit List Login Back Next

REGISTERS

- L2 Registers
 - Items
 - Causes
 - Material Statuses
 - Package Type
 - Users
 - Default LUs
 - Orders
 - Unit of Measurement
 - Item Categories
 - Item Extension

Update Filter Detail New Delete Filter on exits Show Functions Item Immediate Printing

Item TSHIRT

Item Register

Drag the column heading here for grouping.

Item	Description	Notes	Category	Average unit weight	Inventory	Stock	Availability	Host	Under-
C00007	HardDisk SATA (320 Gb)			0	1/1/1900 12:00:00 AM	0	0	<input type="checkbox"/>	0
C00008	HardDisk SATA (500 Gb)			0	1/1/1900 12:00:00 AM	0	0	<input type="checkbox"/>	0
ITEM001	ITEM001			0	7/8/2010 10:41:10 AM	144.000	144.000	<input type="checkbox"/>	0
ITEM002	ITEM002			0	7/7/2010 5:46:43 AM	192.000	192.000	<input type="checkbox"/>	0
KEY	KEY			0	1/1/1900 12:00:00 AM	1.000	1.000	<input type="checkbox"/>	0
C00001	Keyboard (Usb)			0	1/1/1900 12:00:00 AM	0	0	<input type="checkbox"/>	0
C00009	MotherBoard			0	1/1/1900 12:00:00 AM	0	0	<input type="checkbox"/>	0
M00002	Motor			0	1/1/1900 12:00:00 AM	0	0	<input type="checkbox"/>	0
C00002	Mouse (Usb)			0	1/1/1900 12:00:00 AM	0	0	<input type="checkbox"/>	0
E00005	Multifunction Rele Scale			0	1/1/1900 12:00:00 AM	0	0	<input type="checkbox"/>	0
E00006	Pilz Emergency Stop Relay			0	1/1/1900 12:00:00 AM	0	0	<input type="checkbox"/>	0
E00008	Plug RJ45			0	1/1/1900 12:00:00 AM	0	0	<input type="checkbox"/>	0
M00001	Pump			0	1/1/1900 12:00:00 AM	0	0	<input type="checkbox"/>	0
C00006	RAM (1 Gb)			0	1/1/1900 12:00:00 AM	0	0	<input type="checkbox"/>	0
C00005	RAM (2 Gb)			0	1/1/1900 12:00:00 AM	0	0	<input type="checkbox"/>	0
C00011	Spare Assembling Components (screw,cable)			0	1/1/1900 12:00:00 AM	0	0	<input type="checkbox"/>	0
M00004	Steel Tube			0	1/1/1900 12:00:00 AM	0	0	<input type="checkbox"/>	0
E00007	Three Core Flexible Cable (1.5 Sqmm 3183Y)			0	1/1/1900 12:00:00 AM	0	0	<input type="checkbox"/>	0
TSHIRT	TSHIRT			0	7/9/2010 9:45:15 AM	44.000	39.000	<input type="checkbox"/>	0
M00003	Valve			0	1/1/1900 12:00:00 AM	0	0	<input type="checkbox"/>	0

Total Stock: 0
Pick-up Engaged: 0
Pick-up Availability: 0

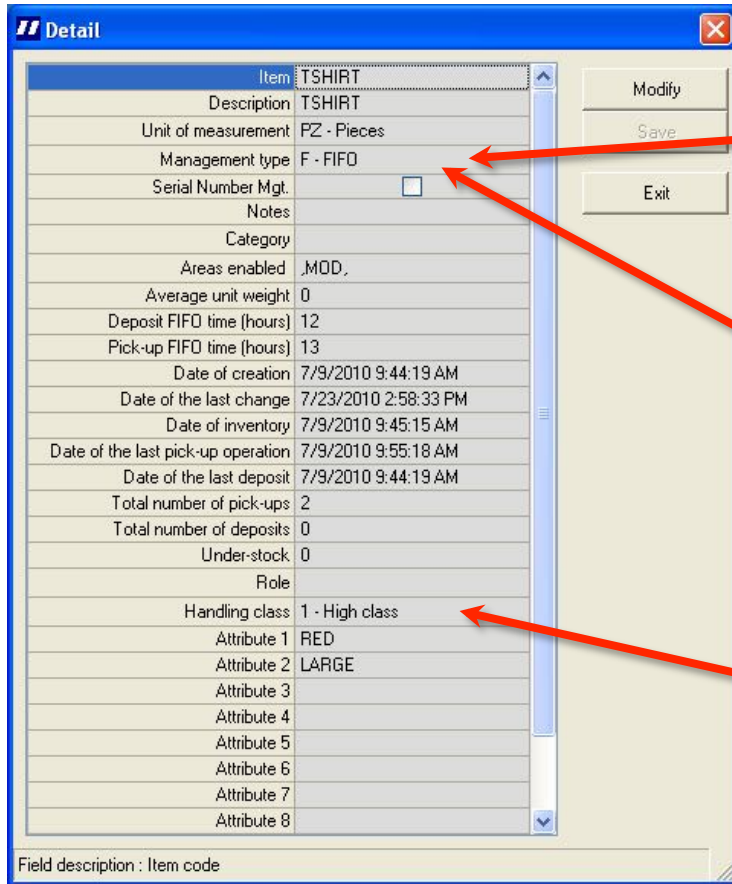
Total Capacity: 0
Deposit Engaged: 0
Deposit Availability: 0

MANAGEMENT
SETUP
DIAGNOSTICS

Pannello

Management Types Available

It is possible to manage items with different movement priority types...



Item	TSHIRT
Description	TSHIRT
Unit of measurement	PZ - Pieces
Management type	F - FIFO
Serial Number Mgt.	<input type="checkbox"/>
Notes	
Category	
Areas enabled	.MOD.
Average unit weight	0
Deposit FIFO time (hours)	12
Pick-up FIFO time (hours)	13
Date of creation	7/9/2010 9:44:19 AM
Date of the last change	7/23/2010 2:58:33 PM
Date of inventory	7/9/2010 9:45:15 AM
Date of the last pick-up operation	7/9/2010 9:55:18 AM
Date of the last deposit	7/9/2010 9:44:19 AM
Total number of pick-ups	2
Total number of deposits	0
Under-stock	0
Role	
Handling class	1 - High class
Attribute 1	RED
Attribute 2	LARGE
Attribute 3	
Attribute 4	
Attribute 5	
Attribute 6	
Attribute 7	
Attribute 8	

Field description : Item code

FIFO: The item's movement priority is based on the material loading date.

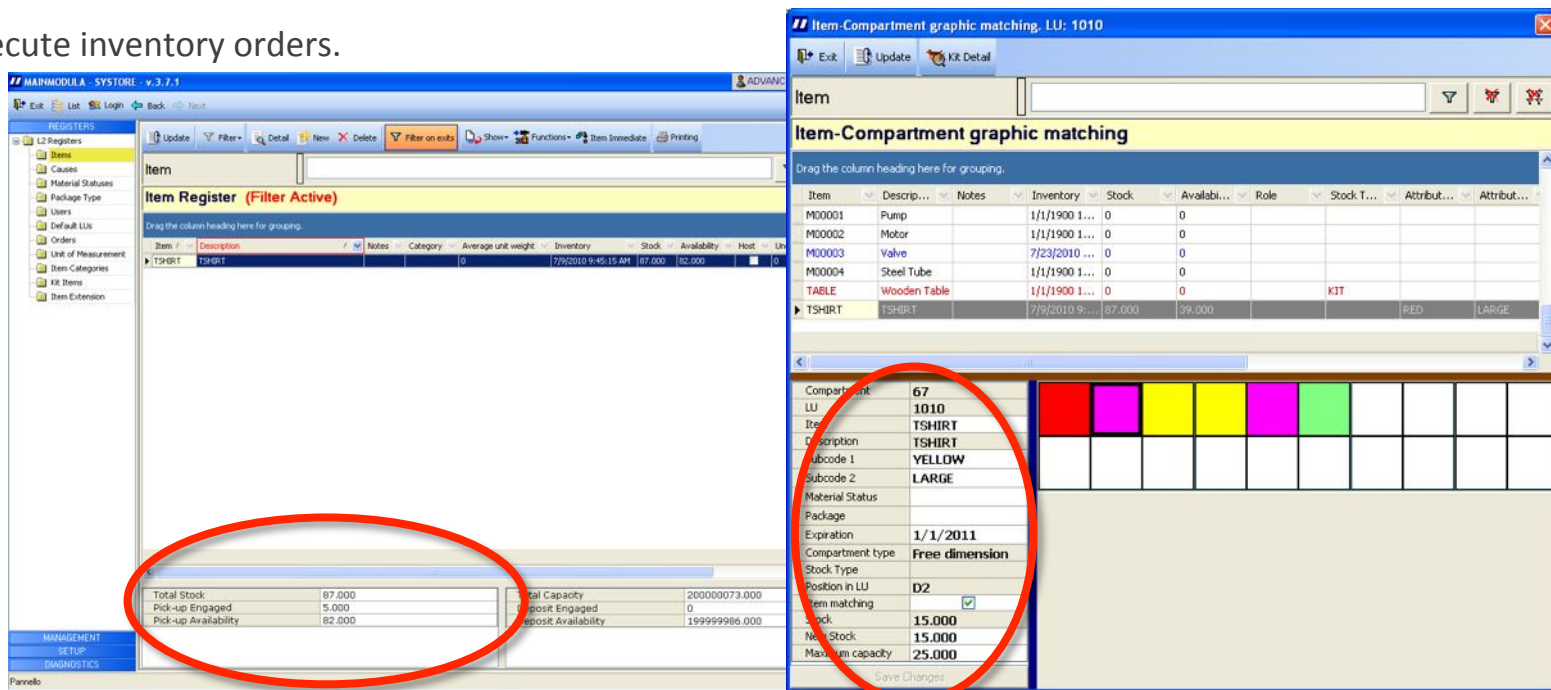
VOLUME: The item's movement priority is based on space occupied in the VLM.

PRIORITY: The item's movement priority orders the sequence based on the sub code of the order.

Inventory Management Capabilities

WMS's Inventory Management capabilities allow users to do the following...

- Execute an inventory for each compartment or location on the trays located within the VLM.
- Execute an inventory for a defined tray range.
- Execute an inventory for each individual item.
- Execute inventory orders.



Item Register (Filter Active)

Item #	Description	Notes	Category	Average unit weight	Inventory	Stock	Availability	Host	Unit
TSHIRT	TSHIRT			0	7/9/2010 9:45:15 AM	87.000	82.000		0

Total Stock: 87.000
Pick-up Engaged: 5.000
Pick-up Availability: 82.000

Item-Compartment graphic matching, LU: 1010

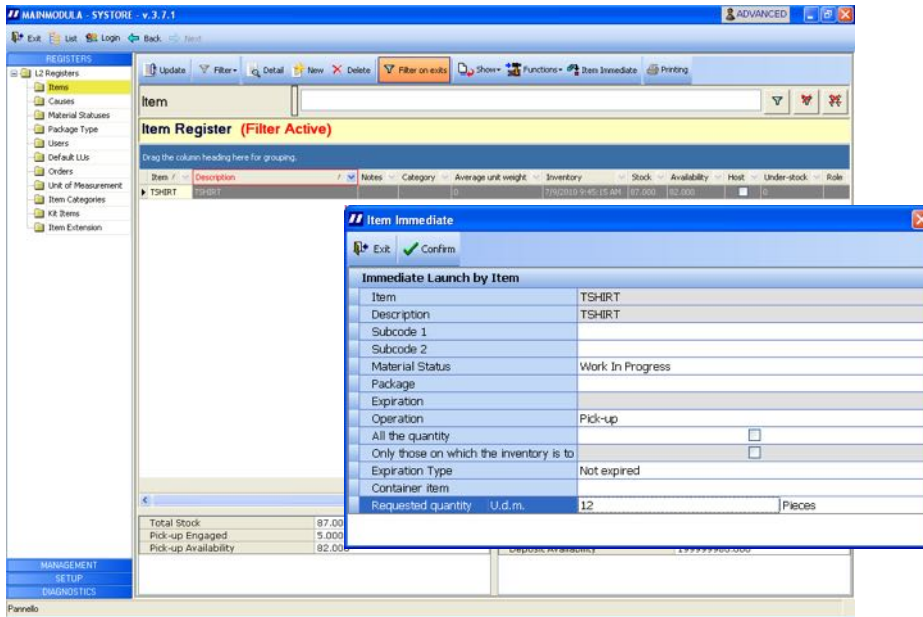
Item	Descr...	Notes	Inventory	Stock	Availabi...	Role	Stock T...	Attribut...	Attribut...
M00001	Pump		1/1/1900 1...	0	0				
M00002	Motor		1/1/1900 1...	0	0				
M00003	Valve		7/23/2010 ...	0	0				
M00004	Steel Tube		1/1/1900 1...	0	0				
TABLE	Wooden Table		1/1/1900 1...	0	0			KIT	
TSHIRT	TSHIRT		7/9/2010 9...	87.000	39.000			RED	LARGE

Compartment: 67
LU: 1010
Item: TSHIRT
Description: TSHIRT
Subcode 1: YELLOW
Subcode 2: LARGE
Material Status:
Package:
Expiration: 1/1/2011
Compartment type: Free dimension
Stock Type: D2
Position in LU:
Item matching: ☒
Stock: 15.000
New Stock: 15.000
Maximum capacity: 25.000

Basic Management For Picking & Replenishment

Basic Management allows users to do the following...

- Pick and replenish items with immediate requests.
- Pick and replenish items with orders created locally or imported from the host system.
- Simulate orders to verify their outcome.
- Tell the VLM to move immediately upon the execution of an order, or it is possible to wait for a local activation.



The following features and functionality are also available for picking and replenishment operations using WMS software:

- Automatic Combinations
- Material Engagement Management
- Loading With Transit Area
- Packing List Management
- Batch Picking Management

Order Execution Capabilities

It is possible to select orders to execute or to view their contents, status and priority...

MAINMODULA - SYSTORE - v.3.7.0 USER_EN

Exit List Login Back Next

REGISTERS

- L2 Registers
 - Items
 - Causes
 - Material Statuses
 - Package Type
 - Users
 - Default LUs
 - Orders**
 - Unit of Measurement

Update Detail New Delete Copy Add Items Functions Printing

Order

List of Orders

Drag the column heading here for grouping.

Order	Description	Operat...	Current priority	Host Priority	Exe Pri.	Line statuses	Host
TEST2	IMPORT	Pick-up	0	0	0	EC	<input checked="" type="checkbox"/>
TEST1	IMPORT	Pick-up	0	0	0	CI	<input checked="" type="checkbox"/>
TEST	IMPORT	Pick-up	0	0	0	C	<input checked="" type="checkbox"/>

Order Lines

Drag the column heading here for grouping.

Line	Item	Item description	Item notes	Req. Qty	Eng. Qty	Executed Qty	Priority	Errors	Status	Notes	Pack
402	ARTICOLO 9	ARTICOLO 9		18,000	0	18,000	0	<input type="checkbox"/>	C	Descrizione 9	
401	ARTICOLO 8	ARTICOLO 8		17,000	0	17,000	0	<input type="checkbox"/>	C	Descrizione 8	
400	ARTICOLO 7	ARTICOLO 7		16,000	0	16,000	0	<input type="checkbox"/>	C	Descrizione 7	
452	ARTICOLO 68	ARTICOLO 68		67,000	67,000	0	0	<input type="checkbox"/>	E	Descrizione 68	
451	ARTICOLO 67	ARTICOLO 67		66,000	66,000	0	0	<input type="checkbox"/>	E	Descrizione 67	
450	ARTICOLO 66	ARTICOLO 66		65,000	65,000	0	0	<input type="checkbox"/>	E	Descrizione 66	
449	ARTICOLO 65	ARTICOLO 65		64,000	64,000	0	0	<input type="checkbox"/>	E	Descrizione 65	
448	ARTICOLO 64	ARTICOLO 64		63,000	63,000	0	0	<input type="checkbox"/>	E	Descrizione 64	
447	ARTICOLO 63	ARTICOLO 63		62,000	62,000	0	0	<input type="checkbox"/>	E	Descrizione 63	
446	ARTICOLO 62	ARTICOLO 62		61,000	61,000	0	0	<input type="checkbox"/>	E	Descrizione 62	
445	ARTICOLO 61	ARTICOLO 61		60,000	60,000	0	0	<input type="checkbox"/>	E	Descrizione 61	
444	ARTICOLO 60	ARTICOLO 60		59,000	59,000	0	0	<input type="checkbox"/>	E	Descrizione 60	
399	ARTICOLO 6	ARTICOLO 6		15,000	0	15,000	0	<input type="checkbox"/>	C	Descrizione 6	
443	ARTICOLO 50	ARTICOLO 50		58,000	58,000	0	0	<input type="checkbox"/>	E	Descrizione 50	
398	ARTICOLO 5	ARTICOLO 5		14,000	0	14,000	0	<input type="checkbox"/>	C	Descrizione 5	

MANAGEMENT
 SETUP
 DIAGNOSTICS

Pannello

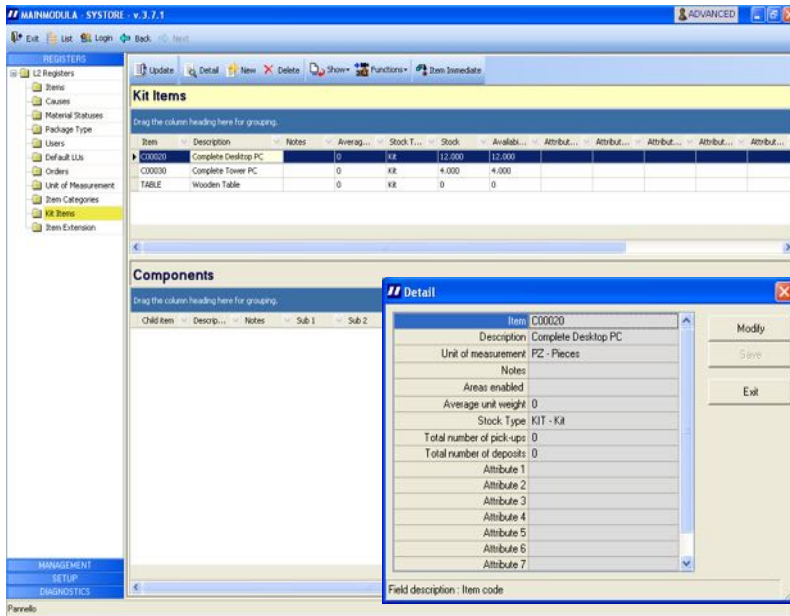
Orders

Order Information

Kit Management Capabilities

Kit management is useful to arrange items during the replenishment process to assist the ease of the picking process...

- During the replenishment process, items are loaded into assigned compartments until the required quantity has been reached.
- When a compartment contains all the elements needed to complete the kit, it's possible to pick the entire kit with a single operation.



Kit Items

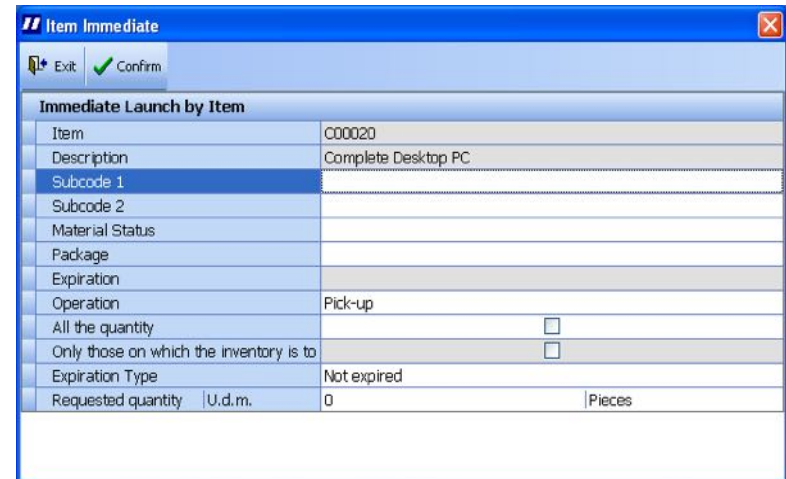
Item	Description	Notes	Average	Stock T...	Stock	Availab...	Attribut...	Attribut...	Attribut...	Attribut...
C00020	Complete Desktop PC		0	KIT	12.000	12.000				
C00030	Complete Tower PC		0	KIT	4.000	4.000				
TABLE	Wooden Table		0	KIT	0	0				

Components

Child Item: C00020, Description: Complete Desktop PC, Notes: , Sub: 1, Sub: 2

Detail

Item: C00020
 Description: Complete Desktop PC
 Unit of measurement: PZ - Pieces
 Notes:
 Areas enabled:
 Average unit weight: 0
 Stock Type: KIT - Kit
 Total number of pick-ups: 0
 Total number of deposits: 0
 Attribute 1:
 Attribute 2:
 Attribute 3:
 Attribute 4:
 Attribute 5:
 Attribute 6:
 Attribute 7:
 Field description: Item code



Item Immediate

Exit Confirm

Immediate Launch by Item

Item	C00020
Description	Complete Desktop PC
Subcode 1	
Subcode 2	
Material Status	
Package	
Expiration	
Operation	Pick-up
All the quantity	<input type="checkbox"/>
Only those on which the inventory is to	<input type="checkbox"/>
Expiration Type	Not expired
Requested quantity	U.d.m. 0 Pieces

Tray (LU) Detail Information

It is possible to view the specific details and information for a given tray...

Detail

Default LU code	S750P
Def. LU Desc.	Udc Pred. S750P
LU type	S750P - Standard P 2524x800 75...
Default height class	1004 - Height 04
Handling change modality	T - All classes
Tare	0
Minimum tare	0
Maximum tare	0
LU range	MOD - Modula LU
Automatic codification	<input type="checkbox"/>
Empties infeed	<input checked="" type="checkbox"/>
Creation	<input checked="" type="checkbox"/>
Permanent outfeed	<input type="checkbox"/>
External picking	<input type="checkbox"/>
Packing list	<input type="checkbox"/>

Modify

Save

Exit

Field description : Description

Tray Type

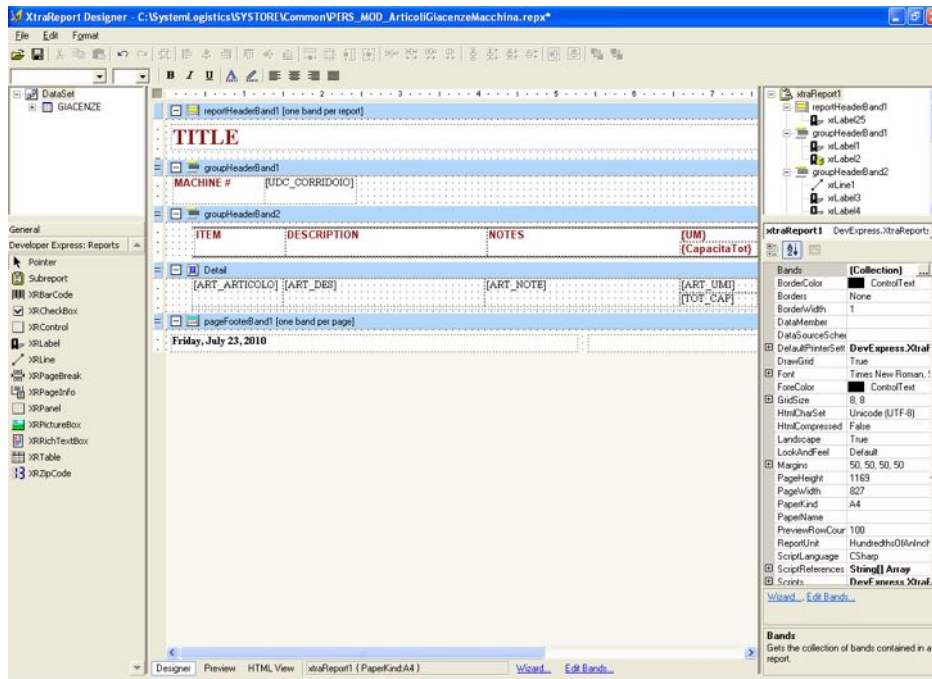
Tray Variables

Tray Weights / Loads

Print Report Capabilities

The software has several preconfigured built-in reports available.

It is also possible to create custom reports with an easy to use, intuitive report tool...



Anagrafica UDC - scomparti per macchina:

Machine 1

LU: 1001	LU type	LL50D	Compartment	Item	Description	Data Vers.	Position	Stock	In Prel.	In Vers.	Capacity	Sub 1	Sub 2	Stato Mat.
1	ITEM001	ITEM001	07/07/2010	B2	144	0	0	500						
7	ITEM002	ITEM002	07/07/2010	X2	192	0	0	200						

LU: 1002	LU type	LL50D	Compartment	Item	Description	Data Vers.	Position	Stock	In Prel.	In Vers.	Capacity	Sub 1	Sub 2	Stato Mat.
18	KEY	KEY	07/07/2010	Z1	1	0	0	1						

LU: 1004	LU type	LL50D	Compartment	Item	Description	Data Vers.	Position	Stock	In Prel.	In Vers.	Capacity	Sub 1	Sub 2	Stato Mat.
42	TSHIRT	TSHIRT	07/09/2010	B2	25	0	0	99999999				RED	LAROE	
43	TSHIRT	TSHIRT	07/09/2010	F2	19	5,000	0	99999999				BLUE	LAROE	

LU: 1010	LU type	LL50D	Compartment	Item	Description	Data Vers.	Position	Stock	In Prel.	In Vers.	Capacity	Sub 1	Sub 2	Stato Mat.
66	TSHIRT	TSHIRT	07/23/2010	B2	25	0	0	25				RED	LAROE	
67	TSHIRT	TSHIRT	07/23/2010	D2	15	0	0	25				YELLOW	LAROE	

Friday, July 23, 2010

1 / 2

Current Page No: 1 | Total Page No: 2 | Zoom Factor: 100%

Manual Areas Management

Basic Management:

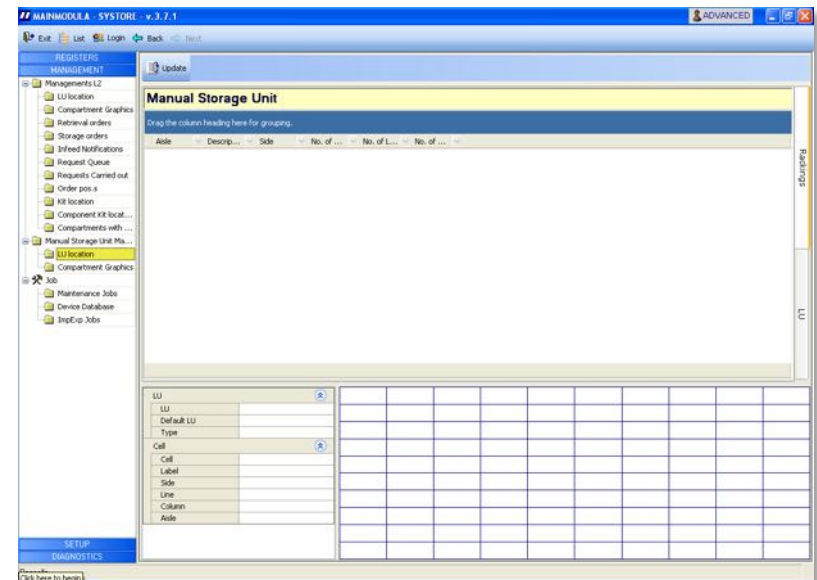
With Basic Management functionality, it is possible to do the following:

- Manage an item's location within the manual storage area(s).
- Print a report with a comprehensive list of the loading, picking, and inventory operations that have taken place.
- Confirm the movements of items within the manual storage area(s).

Area Management:

With Area Management functionality, it is possible to do the following:

- Manage a minimum stock for each area.
- Create internal movements to replenish items from different areas.



Manual Areas Management

RF Terminal Management:

With RF Terminal Management functionality, it is possible to do the following:

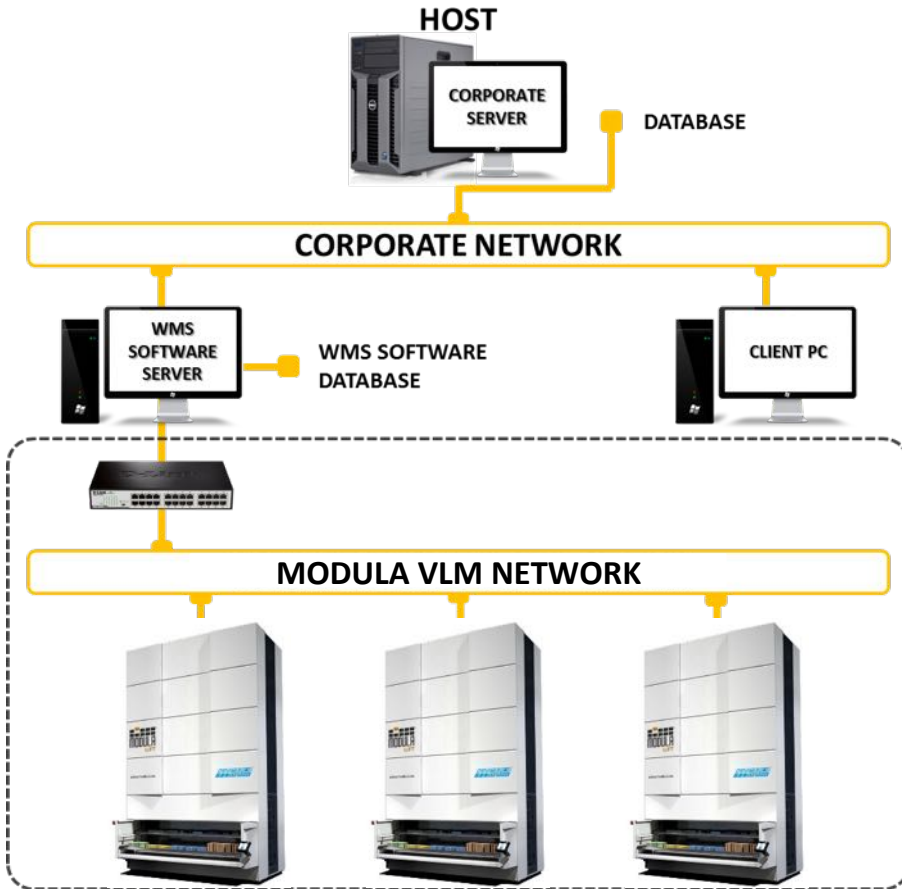
- Manage in real time the activities in the manual storage area(s).
- Track the users / operators.
- Split operations between operators depending on the area's assignment.
- Execute and confirm immediate requests.
- Confirm the loading movements indicating directly the destination tray.
- Execute inventory movements.
- Create locations "on the fly" (item mapping).

Input Areas:



- It's possible to manage input type orders that contain items immediately available for picking on a virtual loading unit called "input area".
- The items present in these areas have a higher priority for the picking movements.
- A tool is available to create transfer orders from the input area to the VLM unit(s).



WMS Software; Options For Integration



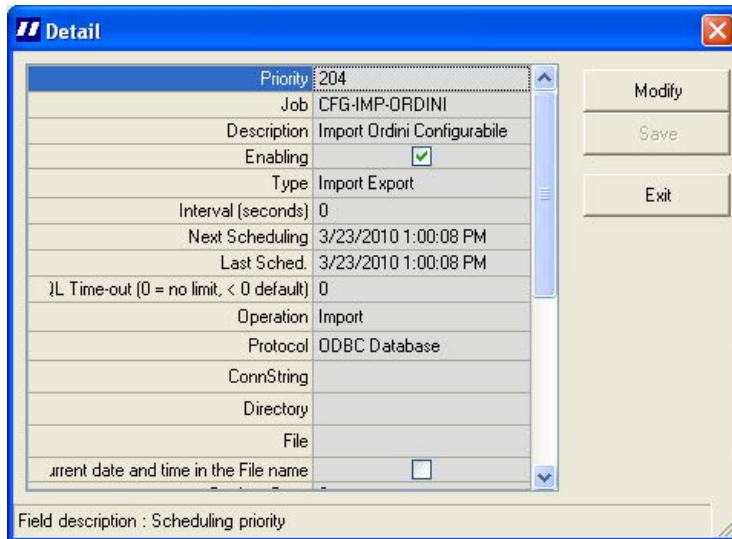
Options For WMS Software Integration:

1	Database With ODBC Support	Uses an ODBC connection to the Host database to read data being imported and/or write export data. This is the most flexible solution, it enables users to enter, modify and delete data using the SQL statements supported by the selected ODBC driver.
2	ASCII Data Files	Enables the user to import one or more ASCII files. There is a table for every file.
3	XML Data Files	Enables the user to import one or more XML files, whereas the export function creates a single file. It is necessary to specify the reading scheme for the XML file in order to import data.
4	Excel Files	Particular implementation of the ODBC database. Uses the ODBC driver for Excel. Every job will have its own associated Excel file, containing the necessary tables. The user can read and enter data, but cannot delete or modify them.
5	IDOC For WM	Integration to SAP using the WM module. Other modules such as the MM module are to be available shortly.
6	Full Process Integration	 

Integration To A Host System

It is possible to import / export data to and from a Host WMS/ERP...

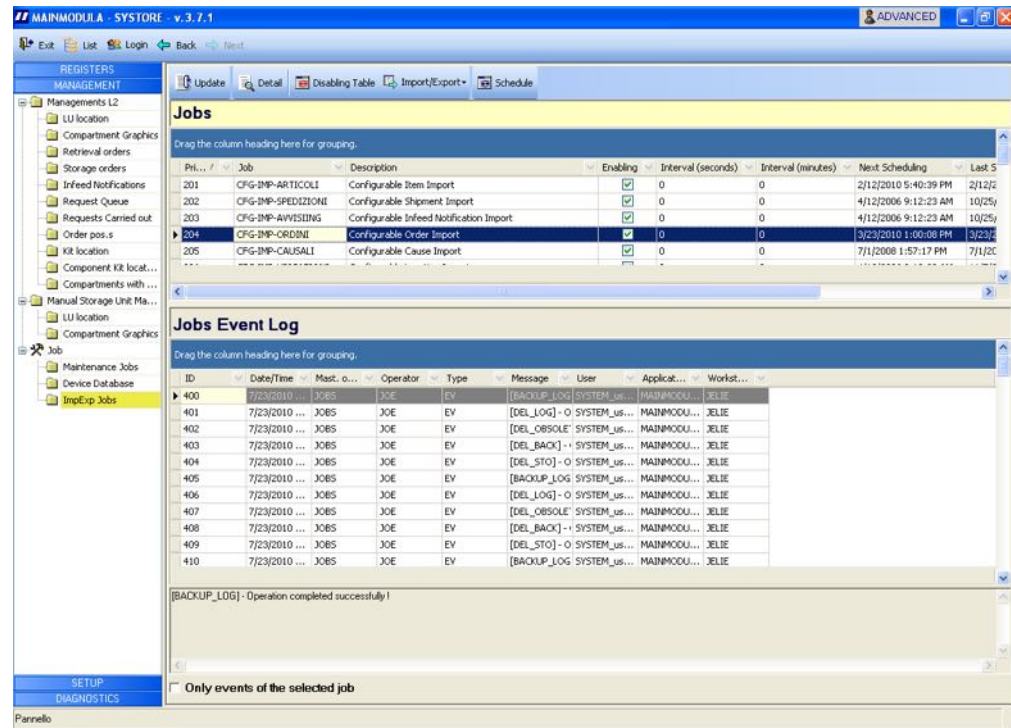
- Available for both automatic and manual operations.
- With the automatic feature it's possible to define when to execute the operations and the time interval between two executions.
- The data exchange can be performed via ASCII files, XML files, Excel Spreadsheets, and data exchange on shared tables accessible via an ODBC driver.



Detail

Priority	204
Job	CFG-IMP-ORDINI
Description	Import Ordini Configurabile
Enabling	<input checked="" type="checkbox"/>
Type	Import Export
Interval (seconds)	0
Next Scheduling	3/23/2010 1:00:08 PM
Last Sched.	3/23/2010 1:00:08 PM
Time-out (0 = no limit, < 0 default)	0
Operation	Import
Protocol	ODBC Database
ConnString	
Directory	
File	
Insert date and time in the File name	<input type="checkbox"/>

Field description : Scheduling priority



MAINMODULA - SYSTORE - v.3.7.1

Jobs

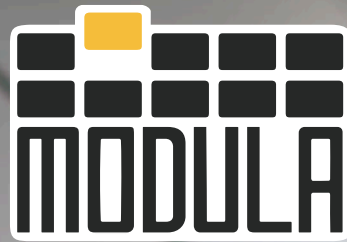
Job	Description	Enabling	Interval (seconds)	Interval (minutes)	Next Scheduling	Last S
201	CFG-IMP-ARTICOLI	<input checked="" type="checkbox"/>	0	0	2/12/2010 5:40:39 PM	2/12/2010
202	CFG-IMP-SPEZZIONE	<input checked="" type="checkbox"/>	0	0	4/12/2006 9:12:23 AM	10/25/2006
203	CFG-IMP-APPELLO	<input checked="" type="checkbox"/>	0	0	4/12/2006 9:12:23 AM	10/25/2006
204	CFG-IMP-ORDINI	<input checked="" type="checkbox"/>	0	0	3/23/2010 1:00:08 PM	3/23/2010
205	CFG-IMP-CAUSALI	<input checked="" type="checkbox"/>	0	0	7/1/2008 1:57:17 PM	7/1/2008

Jobs Event Log

ID	Date/Time	Mast. o...	Operator	Type	Message	User	Applic...	Workst...
400	7/23/2010 ...	JOE	JOE	EV	[BACKUP_LOG] SYSTEM_us...	MAINMODU...	JELIE	
401	7/23/2010 ...	JOE	JOE	EV	[DEL_LOG] - O SYSTEM_us...	MAINMODU...	JELIE	
402	7/23/2010 ...	JOE	JOE	EV	[DEL_OBSE] SYSTEM_us...	MAINMODU...	JELIE	
403	7/23/2010 ...	JOE	JOE	EV	[DEL_BACK] - I SYSTEM_us...	MAINMODU...	JELIE	
404	7/23/2010 ...	JOE	JOE	EV	[DEL_STO] - O SYSTEM_us...	MAINMODU...	JELIE	
405	7/23/2010 ...	JOE	JOE	EV	[BACKUP_LOG] SYSTEM_us...	MAINMODU...	JELIE	
406	7/23/2010 ...	JOE	JOE	EV	[DEL_LOG] - O SYSTEM_us...	MAINMODU...	JELIE	
407	7/23/2010 ...	JOE	JOE	EV	[DEL_OBSE] SYSTEM_us...	MAINMODU...	JELIE	
408	7/23/2010 ...	JOE	JOE	EV	[DEL_BACK] - I SYSTEM_us...	MAINMODU...	JELIE	
409	7/23/2010 ...	JOE	JOE	EV	[DEL_STO] - O SYSTEM_us...	MAINMODU...	JELIE	
410	7/23/2010 ...	JOE	JOE	EV	[BACKUP_LOG] SYSTEM_us...	MAINMODU...	JELIE	

[BACKUP_LOG] - Operation completed successfully!

Only events of the selected job



Thank You For Your Attention

MODULA®

90 Alfred A. Plourde Parkway

Lewiston, ME 04240; U.S.A.

Tel.: (207) 440-5100

Fax.: (207) 786-0271

info@modula.us

www.modula.us