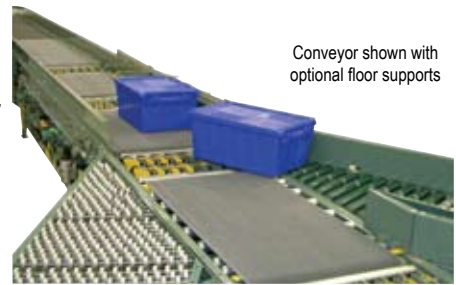


# PROSORT SC1 & SC2

The Model ProSort SC series of sorters are belt driven sortation conveyors. The belt concept provides a reliable method of tracking packages to the divert stations. Take-away spurs may be skatewheel-type or powered-type slaved from the main sorter.

## Horizontal Belt Sortation Conveyor

- 4 Belt Widths
- Right Hand, Left Hand or Two-Sided Diverts Available
- Adjustable MS-Type Floor Supports Available



Conveyor shown with optional floor supports

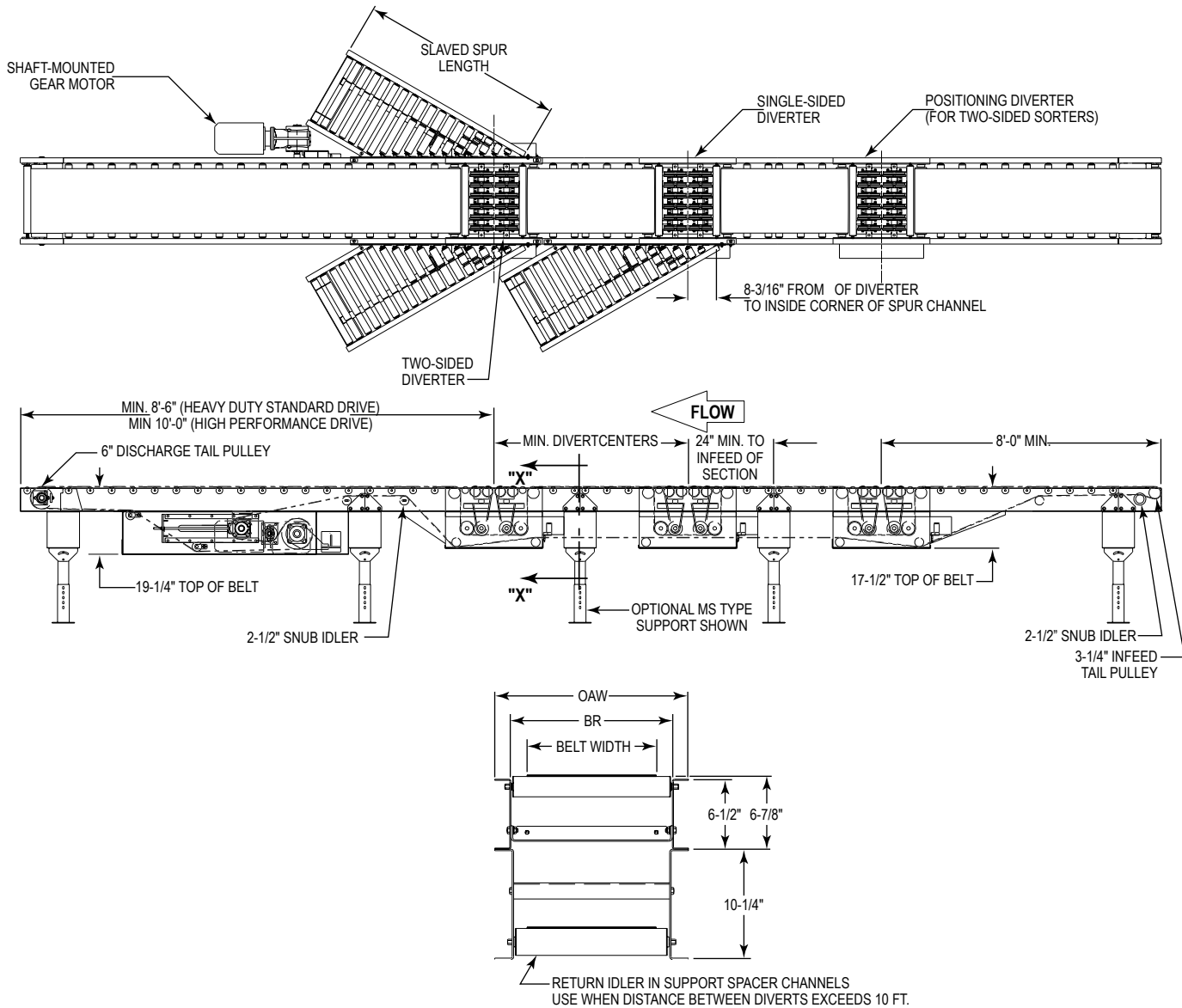


Overall Width "OAW"	Between Rail Width "BR"	Belt Width	Minimum Divert Centers	Slaved Spur Length	Base Weight	Conveyor Weight Per Foot	Diverter Weight	Slaved Spur Weight
18"	15"	12"	42"	57"	480	21	300	115
24"	21"	18"	54"	57"	570	23	365	130
30"	27"	24"	66"	57"	660	26	430	140
36"	33"	30"	78"	69"	750	29	495	175

Gearmotor Wt.	
HP	LBS
3	100
5	126
7.5	152
10	192

NOTE: To calculate conveyor weight use the following formula:

Total Weight = Base weight + gearmotor weight + (Conveyor weight per foot X Overall Length) + (Diverter weight X Number of diverters) + (Slaved spur weight X Number of slaved spurs)



## • STANDARD SPECIFICATIONS

**BELT**—Ultimate 140 BBS-Nitrile.

**BED**—Roller bed with 1.9 in. dia.x 16 ga. galvanized rollers with ABEC-1 bearings spaced every 6 in. Mounted in 6 ½ in.x 12 ga. powder painted formed steel channel frame bolted together with splice plates.

**DRIVE PULLEY**—8 in. dia. with 1 ⅞ in. dia. shaft at bearings, machine crowned and fully lagged.

**INFEED TAIL PULLEY**—3 ¼ in. dia. “drop-in” pulley, machine-crowned.

**DISCHARGE TAIL PULLEY**—6 in. dia. with 1 ⅞ in. dia shaft at bearings, machine crowned.

**SNUB IDLER**—Adjustable 2 ½ in. dia. pre-lubricated ball bearings.

**RETURN IDLER**—Adjustable 2 ½ in. dia. pre-lubricated ball bearings.

**TAKE-UP PULLEY**—6 in. dia. with 1 ⅞ in. dia. shaft at bearings, machine crowned.

**TAKE-UP**—Take-up in center drive provides 15 in. (heavy-duty drive) or 36 in. (high performance drive) of belt take-up.

**PNEUMATIC TENSIONER**—Provides constant belt tension on high-performance drives. Supplied with regulator for 12-15 P.S.I..

# PROSORT SC1 & SC2

**BEARINGS**—Sealed, pre-lubricated, self-aligning ball bearings with eccentric lock collars. Pre-lubricated ball bearings in tread rollers.

**DRIVE**—Heavy-duty (1-3 diverts and less than 30ft OAL) or high-performance center drive, located at discharge end. Shaft-mounted gearmotor and variable speed controller, 230V or 460V-3Ph. 60HZ. Horsepower based on speed and length requirements.

**TRACKING ENCODER**—Provided on take-up pulley shaft. Contact factory for encoder specifications.

**BELT SPEED**—Determined by application requirements. 300 FPM maximum.

**CAPACITY**—Maximum unit package weight 75 lbs. Maximum distributed load of 4000 lbs. Maximum conveyor length is 150 ft.

**MAXIMUM NUMBER OF DIVERTERS**—Double-sided with slaved spurs: 7 diverters (plus one positioning diverter). Single-sided with slaved spurs: 9 diverters. Single- or double-sided with non-slaved spurs: 12 diverters.

**FLOOR SUPPORTS**—Now supplied as optional equipment.

## • STANDARD SPECIFICATIONS - DIVERTER

**CAPACITY**—Maximum unit package weight –75 lbs.

**PACKAGE SIZE**—Minimum: 6 in. wide x 9 in. long. NOTE: Small packages must not be top heavy.

**DIVERTER MECHANISM**—Two banks of twin pivoting 3 ⅞ in. dia. wheels with urethane treads driven by ¾ in. dia. urethane belts. Double sided diverts not available on 18 in. OAW.

**AIR CYLINDER**—32mm dia. bore x 7/8 in. stroke double acting. Dual cylinder for two-sided diverters.

**AIR REQUIREMENTS**—Working pressure 30 to 40 P.S.I. depending on width. Free Air Consumption at 40 P.S.I., .024 cu. ft. per cycle.

**AIR VALVE**—24 volt DC single solenoid 4-way air valve, two per single-sided diverter, four per double-sided diverter.

**AIR FILTER, REGULATOR**—Supplied for main air supply line with ½ in. NPT ports. Required working pressure 30 to 40 P.S.I.

**DRIVE**—Slave driven from main belt conveyor.

**POSITIONING DIVERTER**—Diverter used at infeed of two-sided sorters to position packages for proper diverting.

## • STANDARD SPECIFICATIONS - POWERED SPUR

**BED**—Roller bed with 1.9 in. dia.x 16 ga. galvanized rollers with ABEC-1 bearings and plastisol coating in spur area spaced every 3 in. Mounted in 6 ½ in.x 12 ga. powder painted formed steel channel frame.

**DRIVE**—Slave driven from main sorter conveyor.

**CONVEYING SPEED**—Matched to main sorter conveyor.

**MOUNTING BRACKET**—Bracket is supplied to attach spur to side channels of ProSort SC.

**BUTT COUPLINGS**—Standard for connecting 190 ACC, 190 LRC, 190 ACZ, 190 LR, or gravity conveyors.

**FLOOR SUPPORTS**—Now supplied as optional equipment.

## • OPTIONAL EQUIPMENT

**FLOOR SUPPORTS**—MS Type floor supports are available with a wide range of adjustment. Specify top of belt or roller elevation. One support required at every bed joint and ends of conveyor. Holes in feet for lagging to floor. Knee braces recommended above MS-6 support.

**TAKE AWAY LINES**—Gravity spurs are available. Consult factory for recommendation of type and configuration.

**GUARD RAILS**—Adjustable channel and fixed channel types available.

**BELT SKIRTS**—Hide return belt.

**UNDERSIDE COVER**—Attach to belt skirts to cover belt on underside of sorter.

**PROSORT LOGIX SC CONTROL PACKAGE**—Provides complete controls for proper sorter operation. Contact factory for details.